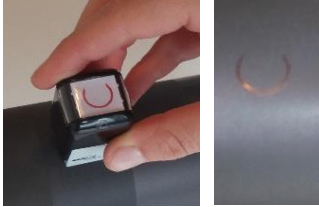


## Perform a measurement



## Quick guide



Use the stamp in order to mark the measurement zone with a circle.



Press OK to start measurement



Do *three* measurements on the anilox surface, inside the circle, with the FerroFluid

Batch00 | n=7 | 17:43  
Anilox volume: **2.8**  $\frac{\text{cm}^3}{\text{m}^2}$   
Press OK to start measurement

The volumetric capacity of the anilox roll is displayed



Do *three* measurements on the anilox surface, inside the circle, without FerroFluid



Apply the FerroFluid on a line about 1 cm long



Clean the FerroFluid on the roll surface with the *AniCheck* cleaning fluid



Spread the FerroFluid with the tractor blade



Clean the probe tip with the towel provided in the kit, or with a dry absorbing paper. Do not use alcohol.

## Read the measurements stored in the memory



Press the STAT knob



Select the function "Readings" with the arrows

Validate by pressing OK



The measurements are displayed :

3	NFe	5.02
4	NFe	4.85
5	Fe	5.78
> 6	Fe	4.47

← Measured volume

When there are more than 4 measurements, press the up/down arrows of the central knob

↑ Measurement number

Roll base material:  
NFe: aluminum base  
Fe: steel base

---

## Switching on and off

ON / OFF button →

Important : press during 2 seconds to switch on)

